

tours and culture

Seattle City Highlights Tour



Learn why Seattle has been named one of America's most livable cities as guides provide historical background on the area, point out interesting landmarks and give insider tips on shopping and sightseeing.

The tour begins with a drive through downtown en route to historic Pioneer Square. From Pioneer Square enjoy a driving tour past the heart of Seattle's Asian community, the International District; a vibrantly eclectic part of Seattle. A stop at the Hiram M. Chittenden Locks will show how the area's fresh and salt waters meet. A highlight of this stop is the underwater viewing at the adjoining salmon ladders. Following the Locks, embark on a scenic drive through Seattle's best neighborhoods.

Travel to Seattle's number one tourist destination, the Space Needle. The Needle stands 605 feet (184 meters) tall and boasts fabulous views of Puget Sound, Mount Rainier, the Cascade and Olympic mountain ranges and, of course, the beautiful city of Seattle. Last but not least, a stop at Seattle's Pike Place Market offers an exciting array of color, aroma, tastes and sounds.

Lifestyles and Lakes Cruise

Embark on a luxurious, two-hour cruise in Lake Union and Lake Washington. Amidst the backdrop of sparkling water, majestic Mt. Rainer, and the unique inner-city shoreline, view the stunning estates of Seattle's rich and famous. Starting in Lake Union, see kayakers, sailors and the historic houseboat community, including the famous houseboat from *Sleepless in Seattle*.

Cruise into Lake Washington and pass the University of Washington's Husky Stadium and Seattle's famous floating bridge. While cruising, behold million-dollar mansions including the home of Microsoft co-founder Bill Gates, as well as more handcrafted houseboats.



Northwest Winery Tour



Come and experience Washington's celebrated Woodinville Wine Country, where the proof is in the bottle. Situated on the same latitude as the French wine country, Washington State has a growing wine industry that is winning prestigious awards throughout the world. Located on 87 acres of arboretum-like grounds, Chateau Ste. Michelle is the state's oldest and most famous winery. After a tour and tasting, stroll

the manicured grounds and browse through the extensive wine and accessory shop. Other fine wines will be sampled at nearby Januik | Novelty Hill and DeLille Cellars.

Eastside Highlights Tour

A magnificent waterfall, Swiss chocolates and botanical gardens, this is truly a day to savor.

Feel the rush of Washington's awe-inspiring, natural beauty and discover one of the state's most popular scenic attractions, Snoqualmie Falls – a 270-foot waterfall (more than a hundred feet higher than Niagara) on the Snoqualmie River. After the Falls, continue to Boehm's Candy Kitchen. Known throughout the Northwest for their fabulous Swiss chocolates, view the candy making process while sampling delectable confections. A quick drive will bring you to Bellevue Botanical Gardens, boasting 36 acres of rolling hills, undisturbed woodlands, meadows, pristine bogs and display gardens. This destination offers an ever-changing panorama of greenery and color.



Pike Place Market "Lunch & Learn" Cooking Experience



A culinary adventure awaits you at Diane's Market Kitchen where Chef Diane combines her passion for food and talents for teaching. Following a tour of Seattle's Pike Place Market, learn how to prepare a variety of delicious items in an intimate and relaxed setting. Chef Diane's plates are designed to be re-created in a home kitchen with ingredients available in your local farmer's markets and/or grocery stores. Chef Diane's approach to food, humor and simplicity will make your guests feel at home in her bright and

spacious kitchen. Join Chef Diane for two hours of cooking, conversation and fun!

Aviation Tour

Soar into the new world of commercial aviation by exploring Boeing's high-tech facility, the Future of Flight Aviation Center. Featuring hands-on exhibits, videos, graphics and interactive stations, the Future of Flight demonstrates how technology and aviation can serve to connect people and cultures across the globe. Following the Future of Flight Aviation Center, tour Boeing's Assembly Plant. This fascinating tour offers an in-depth view into the many facets of the airplane industry and guests will see airplanes in various stages of assembly.



Flightseeing over Seattle

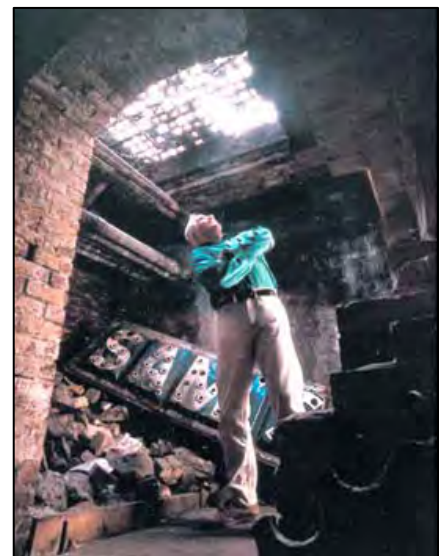


Take a 20-minute scenic flight over one of the world's most beautiful cities by floatplane. Fly over downtown Seattle and see why it's called the Emerald City – a sparkling jewel in a sea of blue. See spectacular glimpses of Shilshole Bay, the Ballard Locks, Lake Union, Lake Washington, the University of Washington, Bellevue, Mercer Island, and more.

Historic Seattle Tour

No visit to Seattle is complete without a visit to the spooky, un-restored city that lies beneath the present day streets. Yesteryear's subterranean sidewalks are dry but the history is not! After the Great Seattle Fire in 1889 the city set about rebuilding deciding to raise the roads to above the first story of buildings creating an "underground city" that is now the subject of the fascinating Underground City Tour. Be led into the cavernous and dark pathways that have been vacant since 1907 under the streets of Pioneer Square.

Following the Underground Tour, explore Pioneer Square's galleries, specialty shops and the Klondike Gold Rush Museum.



Blow Your Own Glass Workshop



Get fired up for a glassblowing experience in the city that has become internationally recognized as the center for glass art, second only to Murano, Italy. Seattle's reputation is reflected in the numerous glass art galleries, public glass collections and studios located throughout the city.

During a customized, hands-on workshop, learn from professional glassblowers and experienced instructors how to create one-of-a-kind glass art pieces. Each person will take home one to two small pieces of their personally-created art as a memento of the experience. At the end of class, instructors will work with the entire group to design one large, beautiful glass piece, which one lucky participant will keep.

Seattle's Art Scene

Explore Seattle's art scene at two exciting locations. Home to Seattle's famous Hammering Man, Seattle Art Museum (SAM) collects and exhibits objects from across cultures, exploring the connections between past and present. From wall texts to audio guides, from computer screens to live narration, SAM offers multiple means and different perspectives to bring works of art to life.



Located on Elliott Bay, the Olympic Sculpture Park transformed a nine-acre industrial site into an open and vibrant green space for art. This waterfront park gives visitors the opportunity to experience a variety of sculptures in an outdoor setting, while enjoying the incredible views and beauty of the Olympic Mountains and Puget Sound.

Cruise the Locks

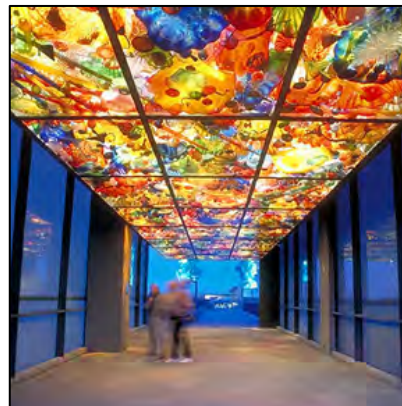


Built in 1917, the Hiram Chittenden Locks were as important for Seattle as the Panama Canal was for the Western Hemisphere. The locks connect the salt water of Puget Sound's Elliott Bay to the fresh water of Lake Union. As you pass through the locks, live narration will explain just how they operate. During the cruise, view the spectacular city skyline, the majestic Cascade and Olympic mountain ranges and the "Sleepless in Seattle" houseboat community.

Tacoma's Museums and Attractions Tour

Travel to the city of Tacoma and tour some of the most exciting museums and attractions in the Northwest. Experience the works of world-renowned artist and Tacoma native, Dale Chihuly including his Seaform Pavilion, Crystal Towers and Bridge of Glass as you make your way to the Museum of Glass.

The Museum of Glass is an international center for contemporary art with a sustained focus on glass. Witness art come alive in the Hot Shop Amphitheater, housed in an impressive 90-foot-tall stainless steel cone.



The Tacoma Art Museum's rich collection contains more than 3,200 significant works and key holdings in nineteenth-century European, twentieth-century American, modern and contemporary Northwest and Asian prints. The collection includes works from artists such as Mary Cassatt, Jean Baptiste, Camille Corot, Dale Chihuly, Edgar Degas, and Pierre Auguste Renoir.

Victoria, British Columbia Day Trip



Dubbed the "City of Gardens" this intimate, sophisticated seaside city is the vacation capital of Canada and one of the premiere tourist spots in the Pacific Northwest. The city's British colonial heritage is still very apparent, but contemporary Victoria has a distinctly Northwest flavor. One of the most visitor-friendly cities anywhere, Victoria is alive with cosmopolitan dining, superb shopping, a colorful nightlife, and a full complement of cultural offerings.

From Seattle, board the Victoria Clipper and sail to the downtown harbor of Victoria. Spend the day exploring British Columbia's most charming city. There is much to see and do in Victoria: the Parliament Building, the Royal BC Museum, Afternoon Tea at the elegant Empress Hotel, Crystal Gardens, and, of course, the famous Butchart Gardens.